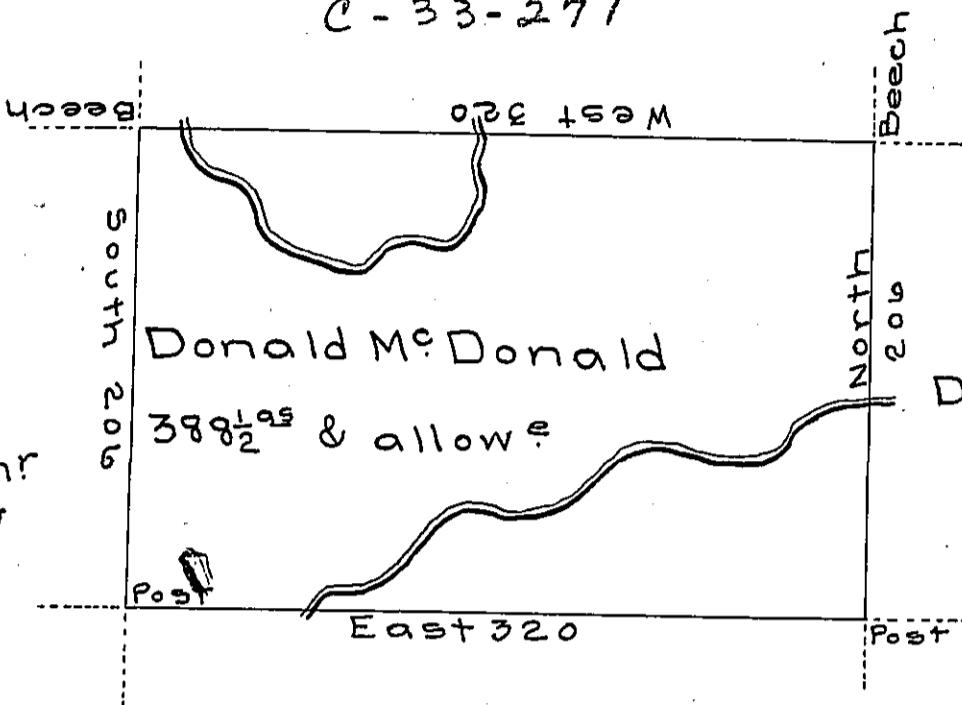


Baltis Clymer
C-33-271

Stepher
Paschal Junr
C-167-88



Deborah Dawes
C-56-22

Sam! Wetherill
A-40-281

A draught of a tract of land called—situate on the waters of Wyolusing creek joining land survd for Baltis Clymer & others in Luzern—(formerly Northumd) county containing three hundred and eighty eight acres $\frac{1}{2}$ & allowe of six pcent for roads & survd for Donald McDonald the 29th day of August 1787 in pursuance of a warrant dated the 27th day of July 1787

To John Lukens Esqr }
Surv: Gen! }

by
Wm Gray D.S.

IN TESTIMONY that the above is a copy of the original remaining on file in the Department of Internal Affairs of Pennsylvania, made conformably to an Act of Assembly approved the 16th day of February, 1833, I have hereunto set my Hand and caused the Seal of said Department to be affixed at Harrisburg, this nineteenth day of January 1906

Isaac D. Brown
Secretary of Internal Affairs.